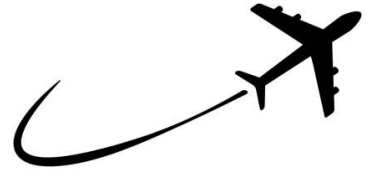


# Study Trip 2026

## Hype Evening



# The committee



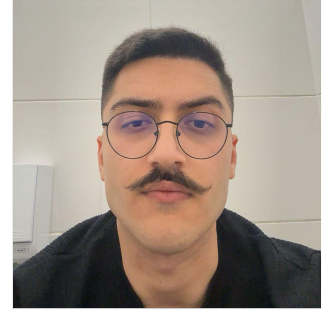
Mees - Chair



Jort - Treasurer



Jonathan - External



Furkan - Culture



Hanna -  
Partnerships



Patrick -  
Accommodation



Ruben - Transport



Joep - Internal affairs

# The committee



## What is a study trip?

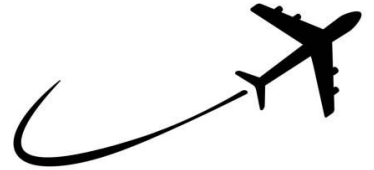
- A week long ~~(vacation)~~ **study focussed trip** partly sponsored by Sticky and Dutch companies.
- A great and **affordable** way to visit and **experience** a different country with a unique culture.
- Meet new people and make (new) **friends**.
- A chance to learn about different **companies** and work cultures, both in NL and in the country we visit.
- See a **university** and study association in a different country.
- Bragging rights for winning the weighted lottery.
- **Amazing fun!**



# Study Trip last year: Istanbul, Turkey!



So where are  
we going?



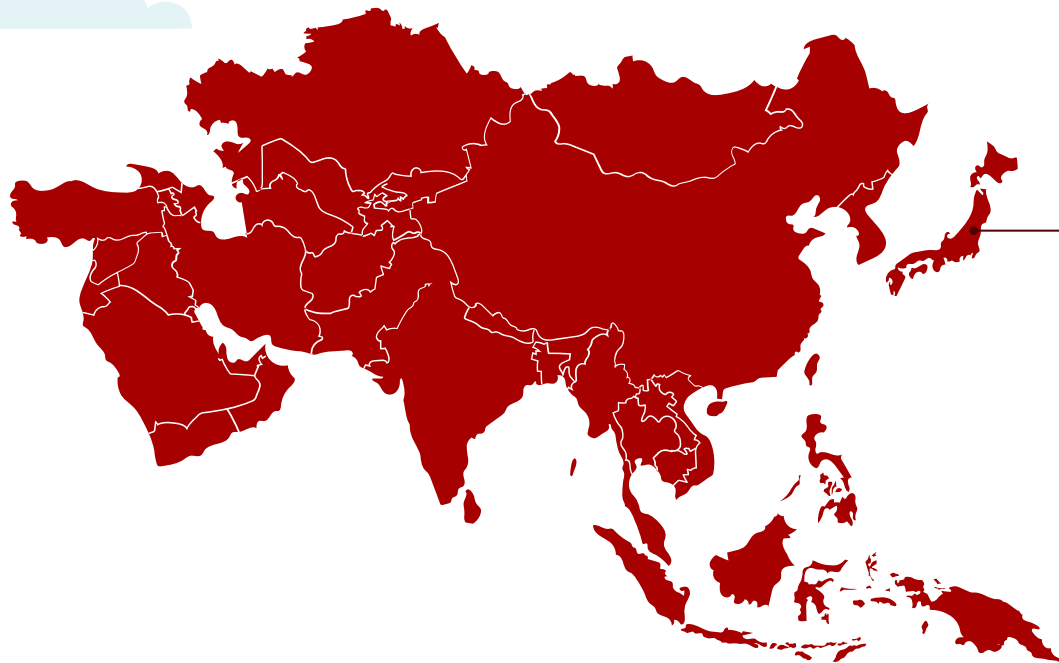


# TOKYO

## Japan

Who could have guessed?

# Locate the country



**Tokyo**









# **What to do in Tokyo?**

# Akihabara: The Electric Town ⚡

**Otaku:** Worldwide centrum for anime, manga and gaming.



# Car Culture & JDM

**Street Scene:** Shibuya en Ometosando

**Daikoku PA ->**





# Chaos vs. Zen

- Shibuya Crossing (Shibuya sky)
- Senso-ji & Meiji Jingu
- Karaoke Bar



# Food

- Loev to the 7-eleven, FamilyMart & Lawson
- Viral Cream Sandwich
- A lot of ramen
- Conveyor belt sushi





# Culture

- 5 Million Vending machines
- High-Tech WC
- NoodleSlurp
- Slight bow
- Age of drinking 20+
- Quietness in the trains
- Shoes off in certain places
- Do not walk and eat
- Trash
- Giving tips
- Paying with both hands
- Do not put chopsticks vertically
- Do not hand over food from sticks to sticks



# Cost of living

## Currency exchange

1 euro = 181.00 yen

## 0.5L beer

€3,32

## Meal at an inexpensive restaurant

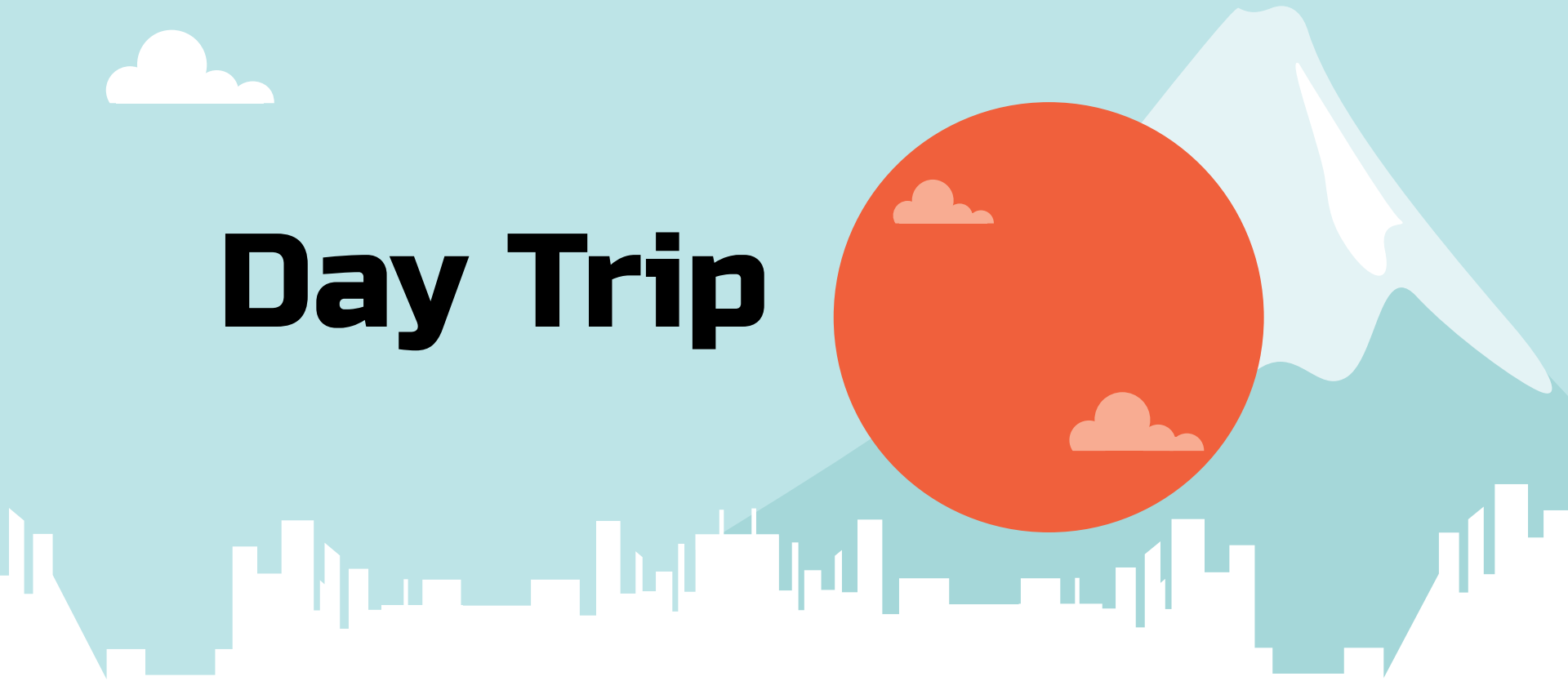
€6,65

## Public transport (1-way)

€1,19



# Day Trip



# Day Trip - Option 1

Mount Fuji!





# Day Trip - Option 2

## Tour Bus!

Route	Geschatte duur van de volledige lus (Non-stop)	Populaire haltes
<b>Rode Route</b> (Asakusa & Tokyo Skytree)	~ 75 minuten	Tokyo Skytree, Asakusa (Senso-ji Tempel), Ueno.
<b>Blauwe Route</b> (Tokyo Tower, Tsukiji, Ginza)	~ 75 minuten	Tokyo Tower, Tsukiji, Ginza, Odaiba.
<b>Groene Route</b> (Shinjuku, Shibuya)	<u>Ongeveer 2 uur</u>	Shinjuku Gyoen, Shinjuku Station, Harajuku, Shibuya.





# Day Trip - Option 3

DISNEYLAND!!!!



A stylized illustration of a city skyline with white buildings of varying heights against a light blue sky. A large, solid orange circle, representing a sun or moon, is positioned on the left side, partially obscured by the buildings. Two white, fluffy clouds are also visible in the sky.


# Accomodation

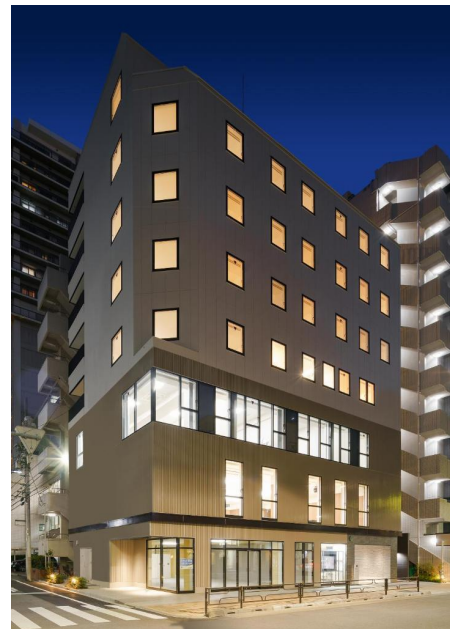
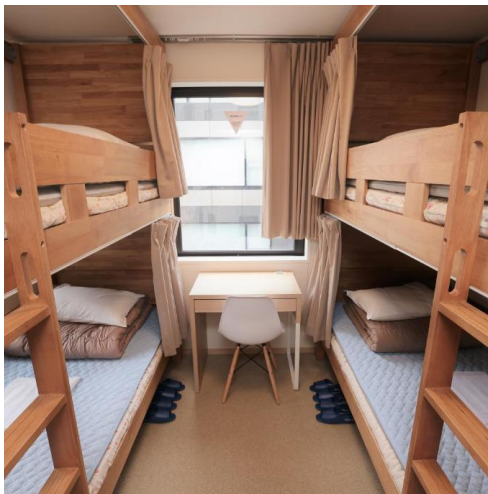
**Where are we staying?**

# Tokyo Ueno Youth Hostel

 8.8 Heerlijk • [1.238 beoordelingen](#)

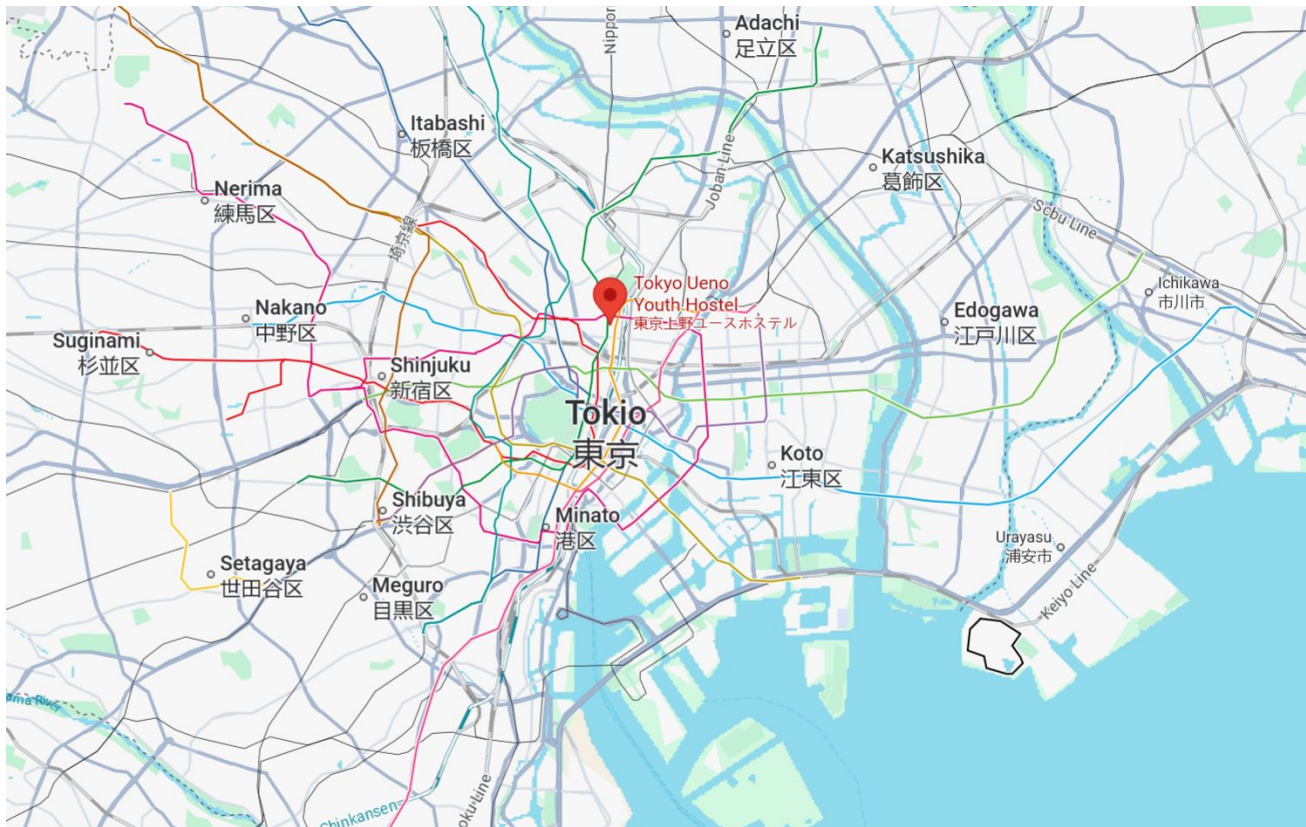


- Taito-ku, Ueno 1-13-6, Taito, 110-0005, Tokyo, Japan -
- Opened in 2021
- 10-minute walk from Akihabara (Electric Town -> electronics stores) 
- Subway nearby
- 3~6 people per room
- Each room has its own shower and toilet



# Tokyo Ueno Youth Hostel

8.8 Heerlijk • [1.238 beoordelingen](#)







# University & IT



# GROOVE X

“Build trust between humanity and robots,  
to create companions for more enriched and  
secure living.”



GROOVE X



# LOVOT



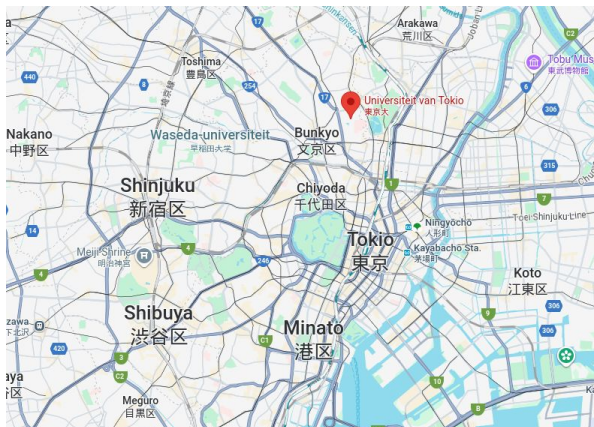
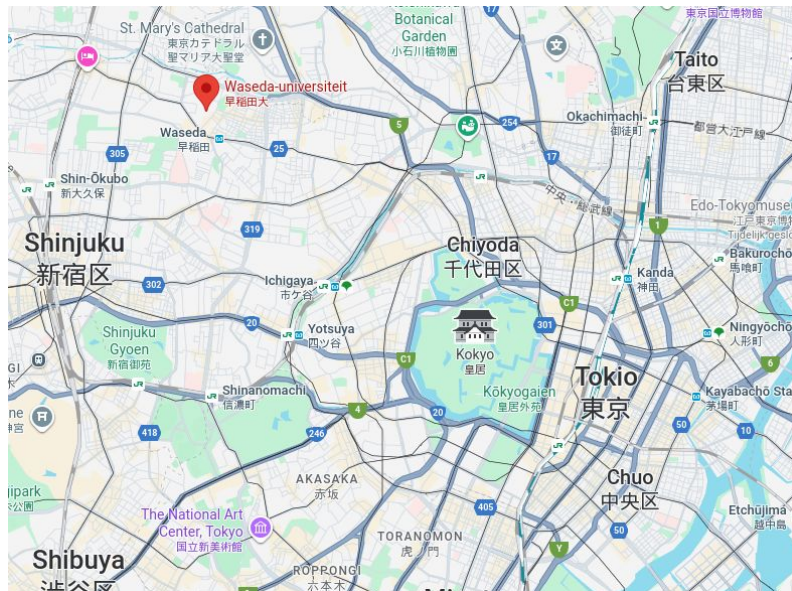
# Other companies & Universities



# Universities



## WASEDA University



# 東京大学

THE UNIVERSITY OF TOKYO



# Transport





# Flight Information

## Outbound

**AMS -> Guangzhou**

11 april  
13:20 - 06:40

**Guangzhou -> Tokyo**

12 april  
08:40 - 14:20

## Inbound

**Tokyo -> Guangzhou**

21 april  
15:40 - 19:15

**Guangzhou -> AMS**

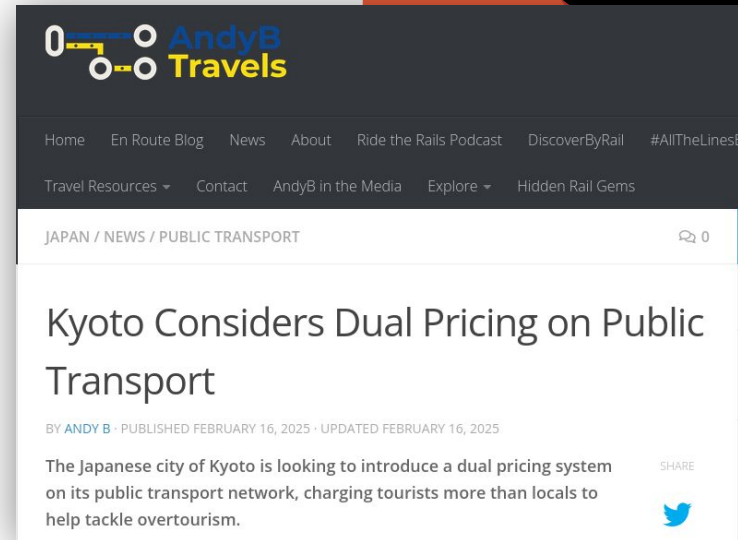
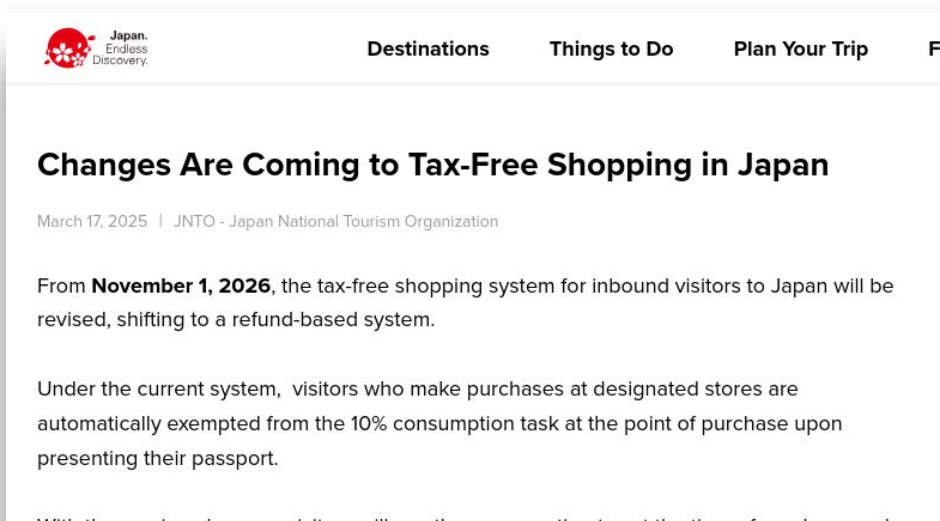
22 april  
00:20 - 06:35



**Talk about  
money**

# Japan is getting more expensive

- Tax free shopping is going away **November 2026** That is 10% off everything!
- Kyoto already has dual-pricing for tourists
- On the way to introduce an accommodation tax up to ¥10,000 (~€55)
- Visa fees rising (for non Dutchies)



# So what's included?

- ✈️ Round-trip flights
- 🏠 Hostel accommodation with private bathrooms
- 📍 Location in the middle of Tokyo
- 🏢 Company visits & university tour
- 🗺️ Day trip
- 🌸 Cherry blossom season

**And that all, for:**

**€1149.99,-**





# **Company events in NL**



# Company activities

- In-house event
- New: lunch lectures!
- Participant shirts(?)





**Save the date**

**11 – 22 april**





## Important dates

# 12 december

Deadline enrollment

# 18 december

Participants drinks

# TBA

Events with companies

# Enrollment procedure

## **Motivation letter**

Write something about why you want to go on this study trip

## **Curriculum vitae**

Update your CV



# Enrollment procedure

**Deadline 12 december 23:59**

<https://forms.gle/noj5wPKUrpcoWRYb6>



# Website

**All information is available on  
[studytrip.svsticky.nl](https://studytrip.svsticky.nl)**

